



Biophysium

# Presentation

R&D AT THE SERVICE OF HEALTH



# About us

---

Biophysium is an innovative bio-health company specialising in the design and provision of services for pre-clinical (cell culture, in-vivo and ex-vivo) and clinical research in the fields of cardiovascular health, metabolic diseases and nutraceuticals.

We analyze the effects of different strategies (nutraceuticals, physical exercise, drugs), starting with assessments at the cellular level, through pre-clinical models, right up to clinical effects.

## Our skills are

- 1. Optimizing** processes or formulations, particularly those based on natural substances.
- 2. Generate** proofs of concept.
- 3. Test, develop** and **identify** the mechanisms of action of molecules/micronutrients/formulations with an impact on the development of cardiovascular, metabolic, oxidative and inflammatory diseases.
- 4. 3D echocardiography** and **AI** for the development of new methods of analysis, prevention and diagnosis of cardiac pathologies.



# Our team

---



**Gaëtan Boléa**

*CEO, CSO, Founder, Chairman of the Scientific Advisory*



**Cyril Reboul**

*Head of Pre-clinical studies department, member of the Scientific Advisory*



**Florence Coste**

*Member of Scientific Advisory*



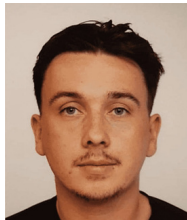
**Grégory Meyer**

*Head of ex-vivo studies and cell culture department, member of the Scientific Advisory*



**Guillaume Walther**

*Head of Clinical studies department, member of the Scientific Advisory*



**Maxime Guin-Gravezat**

*PhD student*

# Our competences

---



Cardiac and vascular echography



Cardiovascular health



Metabolic diseases



Nutraceutical



Analytic Lab



Mitochondrial Function



# Our values

---

Our internal quality policy guarantees confidentiality, **transparency** and **traceability** of results within pre-defined deadlines, so that we can offer you rigorous, high-quality solutions based on Good Laboratory Practice.



A scientific advisory board and our PhD experts provide you with their advice on the design and validate the interpretation of the results to ensure that your study is carried out to optimum effect.



Customer satisfaction is our priority and our values are ethics, integrity, responsibility and innovation.



# Custom project

---

Each project is unique, and the experimental design is optimized to provide the most appropriate and least costly responses in order to provide the best scientific evidence.

We have validated models of heart failure, hypertension, atherosclerosis, diabetes and obesity, we design tailor-made diets, and our platforms for functional exploration, imaging and biochemical analysis enable us to provide a complete range of experimental solutions.

**+60**

**Studies  
completed**

**+45**

**Diseases  
models**

**+50**

**Scientific  
publications**

Find out more about our specific skills in the cardiovascular health, metabolic diseases and nutraceuticals sections on

[www.biophysium.com](http://www.biophysium.com)

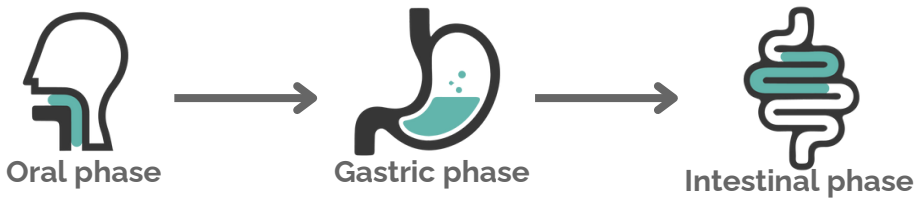
# Innovative skills

## In vitro digestion simulation model

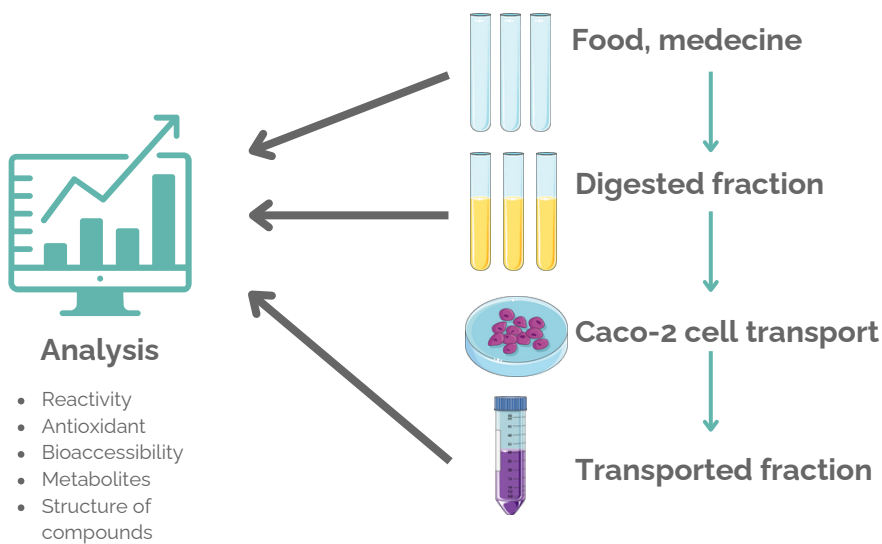
**1.** Food, formulation, medicine, natural substance



**2.** Digestion method for food



**3.** Digestion/Caco-2 cell model



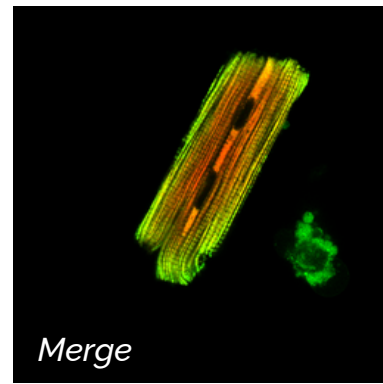
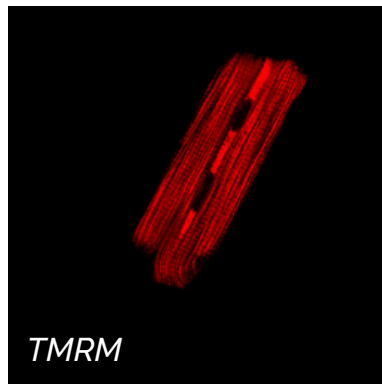


# Innovative skills

## Mitochondria

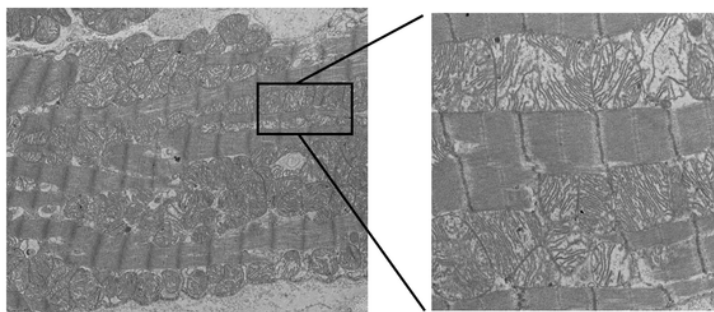
Biophysium offers a wide range of experimental exploration and innovative methods, to assess different treatments and natural formulations on mitochondrial structure and function (toxicity and efficacy).

### Cardiomyocyte studies



The interconnected processes of mitochondrial biogenesis, fusion, fission, and mitophagy collectively work to remove damaged mitochondria from the system.

### Mitochondrial fusion/fission

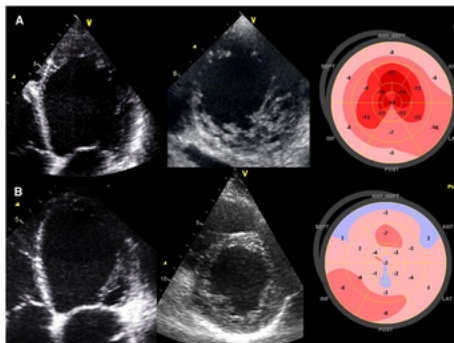


# Innovative skills

## Echocardiography

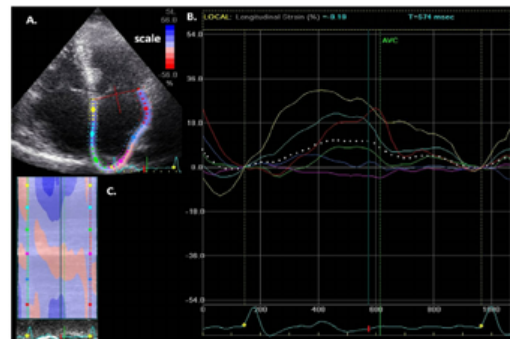
An advancement in 3D echography has emerged, incorporating the visualization of blood flow. This integration not only enhances the prevention of specific pathologies but also provides invaluable assistance to medical practitioners in their diagnostic and treatment processes. By allowing for the dynamic observation of blood circulation within the body, this innovation empowers clinicians with comprehensive insights, facilitating more informed decision-making and potentially leading to more effective patient care strategies.

### Example of Myocardial deformation



- 2D strain/speckle tracking
- Myocardial twist and untwist
- Myocardial work
- Myocardial regional function

### Example of Atrial deformation



- 2D strain/speckle tracking
- Atrial twist and untwist
- Blood volume
- Atrial regional function

# Bibliography

*Boulghobra D, Coste F, Geny B, Reboul C.*

**Exercise training protects the heart against ischemia-reperfusion injury:**

**A central role for mitochondria?**

Free Radic Biol Med. 2020 May 20;152:395-410.

doi:10.1016/j.freeradbiomed.2020.04.005. Epub 2020 Apr 12. PMID: 32294509.

*Dubois M, Boulghobra D, Rochebloine G, Pallot F, Yehya M, Bornard I, Gayrard S, Coste F, Walther G, Meyer G, Gaillard JC, Armengaud J, Alpha-Bazin B, Reboul C.*

**Hyperglycemia triggers RyR2-dependent alterations of mitochondrial**

**calcium homeostasis in response to cardiac ischemia-reperfusion:**

**Key role of DRP1 activation**

Redox Biol. 2024 Apr;70:103044. doi: 10.1016/j.redox.2024.103044. Epub 2024 Jan 19.

PMID: 38266577; PMCID: PMC10835010.

*Boulghobra D, Dubois M, Alpha-Bazin B, Coste F, Olmos M, Gayrard S, Bornard I, Meyer G, Gaillard JC, Armengaud J, Reboul C.*

**Increased protein S-nitrosylation in mitochondria: a key mechanism of exercise-induced cardioprotection.**

Basic Res Cardiol. 2021 Dec 23;116(1):66. doi: 10.1007/s00395-021-00906-3. PMID: 34940922.

*Boulghobra D, Grillet PE, Laguerre M, Tenon M, Fauconnier J, Façon-Berthon P, Reboul C, Cazorla O.*

**Sinapine, but not sinapic acid, counteracts mitochondrial oxidative stress in cardiomyocytes**

Redox Biol. 2021 Dec 23;116(1):66. doi: 10.1007/s00395-021-00906-3. PMID: 34940922.

*Boulghobra D.*

**Développement de stratégies naturelles de cardioprotection:**

**Quel rôle pour la mitochondries ?**

Thèse, 2021.



# Bibliography

*Bolea G, Philouze C, Dubois M, Risdon S, Humberclaude A, Ginies C, Charles AL, Geny B, Reboul C, Arnaud C, Dufour C, Meyer G*

**Digestive n-6 Lipid Oxidation, a Key Trigger of Vascular Dysfunction and Atherosclerosis in the Western Diet: Protective Effects of Apple Polyphenols.**

Mol Nutr Food Res. 2021 Mar;65(6):e2000487. doi: 10.1002/mnfr.202000487. Epub 2021 Feb 2. PMID: 33450108.

*Josse M, Patrier L, Isnard M, Turc-Baron C, Grandperrin A, Nottin S, Mandigout S, Cristol JP, Maufrais C, Obert P.*

**Cardioprotective Effect of Acute Intradialytic Exercise: A Comprehensive Speckle-Tracking Echocardiography Analysis**

J Am Soc Nephrol. 2023 Aug 1;34(8):1445-1455. doi:10.1681/ASN.000000000000149. Epub 2023 Apr 18. PMID: 37071035 Clinical Trial.

*Justine P, Etienne M, Daniel T, Aurélie C, Emmanuelle R, Philippe O, Stéphane N.*

**Left Ventricular Strains and Myocardial Work in Adolescents With Anorexia Nervosa**

Front Cardiovasc Med. 2022 Feb 8;9:798774. doi: 10.3389/fcvm.2022.798774. eCollection 2022. PMID: 35211523

*Maufrais C, Josse M, Patrier L, Grandperrin A, Isnard M, Turc-Baron C, Nottin S, Mandigout S, Cristol JP, Obert P.*

**Cardioprotective effect of intradialytic exercise on left atrial mechanics**

Am J Physiol Renal Physiol. 2024 Mar 21. doi: 10.1152/ajprenal.00380.2023. Online ahead of print. PMID: 38511221

# Let's be part of the future of innovation.



Gaëtan Boléa



06 60 66 39 95



g.bolea@biophysium.com

[www.biophysium.com](http://www.biophysium.com)



**Biophysium**

